



MARVEL UNIVERSE

A PBS Adult Continuing Education *Remote Course*

Open to All Interested Students

No Prerequisite Courses Required - Appropriate for All Students

Dates & Times

Tuesdays from 1:00pm-2:30pm

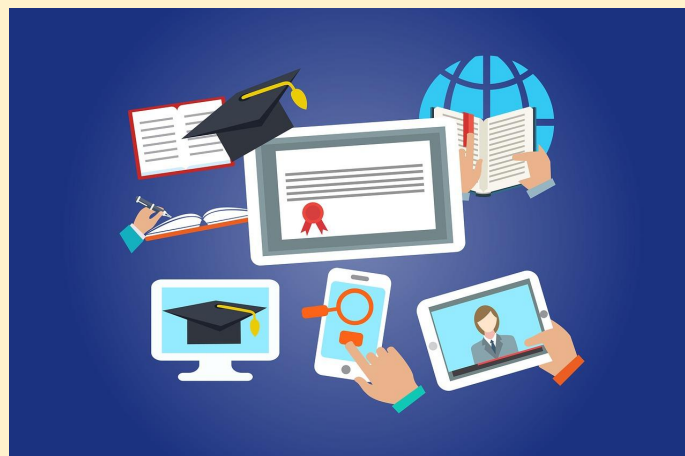
- October 5th, 12th, 19th, 26th, November 2nd, 9th, 16th, 30th, December 7th, 14th.

Course Information and Registration

- **The class will be held on Zoom.**
- **Tuition \$375**
- **All students receive a Certificate of Completion**
- **Register with credit card online: <https://www.positivebehavior.org/adult-education.html>**

See Reverse Side For Full Course Description

Questions? AdultEd@positivebehavior.org



Course Description - Marvel Universe

Enter the Marvel Universe with this examination of all things Marvel. While learning, students will engage in spirited discussion and friendly debate of questions important to every Marvel fanatic (casual fans are also welcome). Topics include:

- How did the creation of the Marvel Universe come about?
- What are the most significant and influential heroes and villains?
- Who is most powerful?
- The thematic journey from early comics to today's Marvel Cinematic Universe
- Marvel cartoons and video games
- And, most intriguing, what are students' best informed predictions of what will happen next in the MCU and beyond?



Your Instructor: Stephanie Stanford



When Stephanie has to work, she is a Licensed Behavior Analyst, having earned a Masters degree in ABA/Autism and a Bachelors degree in Psychbiology. She provides consultation services and parent training in a number of school districts on Long Island.

Stephanie is a long-time comic fan and cosplayer going back to the 90s. She's attended New York Comic Con since 2009 and has a love for all comics including Marvel, Image, DC and IDW. She has amassed a massive collection featuring signed comics and original comic book artwork. In addition to comics, Steph loves video games, Kaiju, science fiction, and fantasy novels. She is also a serious lover of animals.

COVID19 Clause:

PBS ACE classes follow COVID guidelines of host facilities. Under further notice, masks for all students and supports are required regardless of vaccination status as well as safe social distancing. If future guidance mandates, classes may move to a virtual platform.

PBS Adult Education classes are taught using various instructional methods tailored to the specific needs of adult learners. Students will be encouraged to develop critical thinking, research, and study skills, and utilize technology for learning and collaboration. All students benefit from being engaged with interesting material and collaborating with other students.