

POSITIVE | BEHAVIOR | SUPPORT | CONSULTING

& PSYCHOLOGICAL RESOURCES, P.C.

**PBS Campus Experience  
at  
the Charles B. Wang Center  
on the campus of  
Stony Brook University**

**Fall 2018:  
Intro to Creative Writing**

**Mondays, 1:00 p.m. - 2:30 p.m.**

Semester runs September 12, 2018 - December 21, 2018



**Registration is limited to 15 students**

**REGISTER TODAY!**

Tuition for the course is \$350.00 for the semester. PBS can receive payment directly from an approved 3rd party payer (FI).

**See reverse side for course description.**

**Visit our website for schedule of classes and detailed registration instructions.**

**Registration: <http://www.positivebehavior.org/adult-education.html>**

**Questions: [AdultEd@PositiveBehavior.org](mailto:AdultEd@PositiveBehavior.org)**

## Intro to Creative Writing

Have you ever thought about the power of the written word? What makes a good story or a good poem? How is your personality reflected in your writing? Creative writing skills can help you to discover ways to think more creatively and implement creative thought processes in your life.

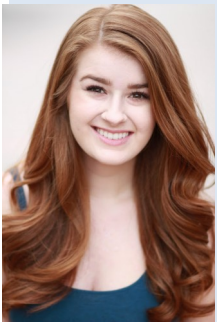
In this course, students will explore a variety of outlets for creative writing such as:

- Short stories
- Poetry
- Fiction and Non-Fiction
- Persuasive writing
- Drama
- Descriptive writing

Through reading and writing exercises, collaboration and discussion, students will learn more about their own creative process. Join us to learn the fundamentals of creative writing and experience the joys that it can bring!

Students will also learn where their creative writing skills can assist them in day to day activities, from home to work.

## Meet the Instructor



**Courtney Braun:** Courtney is thrilled to be teaching another semester for the PBS Campus Experience. As a recent graduate of Stony Brook University with a degree in Psychology, Courtney was a writer for the online school journal. She loves being able to explore the campus and the community of Stony Brook with others. Courtney has a passion for the arts, traveling, food and all things Disney! We hope you consider joining us this semester. It is going to be wonderful!

*PBS Adult Education classes are taught using various instructional methods tailored to the specific needs of adult learners. Students will be encouraged to develop critical thinking, research and study skills, and utilize technology for learning and collaboration. All students inherently benefit from being engaged in an active college environment.*

Space made possible through a grant from  
Positive Behavior Support Community Foundation