

POSITIVE | BEHAVIOR | SUPPORT | CONSULTING

& PSYCHOLOGICAL RESOURCES, P.C.

PBS Adult Continuing Education at the Charles B. Wang Center on the campus of Stony Brook University

Spring 2019: Overview of Musical Theater

Mondays, 3 - 4:30 PM

Semester runs Jan. 28 - June 3, 2019



Registration is limited to 15 students

REGISTER TODAY!

Tuition for the course is \$350.00 for the semester. PBS can receive payment directly from an approved 3rd party payer (FI).

See reverse side for course description.

Visit our website for schedule of classes and detailed registration instructions.

Registration: <http://www.positivebehavior.org/adult-education.html>

Questions: AdultEd@PositiveBehavior.org

Overview of Theater Arts

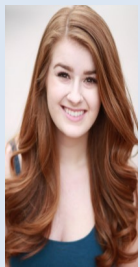
Overview of Musical Theater will cover musicals from their beginning to modern day and what makes them so special.

This course will explore American musical theatre and enhance students' knowledge of the arts, emphasizing the interplay of musical and dramatic values.

We will be focusing on productions that revolutionized the industry, whether through technological, musical, conceptual, or social innovations.

Students will expand upon their understanding of musical theatre history and its rich tradition.

Meet the Instructor



Courtney Braun has been performing for over 17 years throughout Long Island. Courtney attended the Kennedy Center American College Theatre Festival (KCACTF) two years in a row, representing Suffolk Community College in their productions of *Hair* and *Gypsy*. Previously, Courtney has worked alongside various famous artists such as Ben Vereen. Courtney has a strong background in performing, choreographing, and directing numerous shows. She is a founding member of CAST, the Community of Actors for Supported Theater on Long Island based at Think Big Theatre Arts. Join us for what is going to be one amazing semester full of song and dance, and all that jazz!

PBS Adult Education classes are taught using various instructional methods tailored to the specific needs of adult learners. Students will be encouraged to develop critical thinking, research and study skills, and utilize technology for learning and collaboration. All students inherently benefit from being engaged in an active college environment.

Space made possible through a grant from
Positive Behavior Support Community Foundation