

POSITIVE | BEHAVIOR | SUPPORT | CONSULTING

& PSYCHOLOGICAL RESOURCES, P.C.

**PBS Campus Experience  
at  
the Charles B. Wang Center  
on the campus of  
Stony Brook University**

**Spring 2019:  
Total Communication I**

**Wednesdays, 8:30 - 10:00 AM**

Semester runs Jan., 30 - May 29, 2019



**Registration is limited to 15 students**

**REGISTER TODAY!**

Tuition for the course is \$350.00 for the semester. PBS can receive payment directly from an approved 3rd party payer (FI).

**See reverse side for course description.**

**Visit our website for schedule of classes and detailed registration instructions.**

**Registration: <http://www.positivebehavior.org/adult-education.html>**

**Questions: [AdultEd@PositiveBehavior.org](mailto:AdultEd@PositiveBehavior.org)**

## Total Communication I

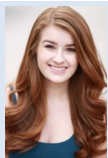
Communication takes on many forms. **Total communication** refers to the complete manner in which people let their ideas be known to others. It is done through spoken words, but also through the use of body language, facial expressions and even sign language.

In this class, the 1st in a 2-semester sequence, we will look at all aspects of how communication occurs, Total Communication. Developed in collaboration with the LIU Post Department of Communication Sciences and Disorders, Total Communication I will focus on “unaided” types communication.

The class Instructor, along with guest lecturers with expertise in the various subject matter covered, will present instructional modules of 3 class sessions each in the following categories:

1. Animal Communication
2. The Sounds We Make
3. Body Language
4. Facial Expressions (Emotional Communication)
5. Sign Language

## Meet the Instructor and Guest Lecturers



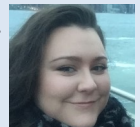
**Courtney Braun:** Courtney is thrilled to be teaching another semester for the PBS Campus Experience.

**Robert Domingo, Ph.D.** is the Chair of the Dept. Of Communication Sciences and Disorders at LIU Post and is also in private practice .



**Dr. Robin Sturtz** is the Director of the LIU Post Veterinary Technology Program and President of the Long Island Veterinary Medical Association.

**Katherine Polchinski** holds a Bachelor of Sciences degree in Speech - Language Pathology and Audiology from LIU Post and was active in American Sign Language organizations as part of her undergraduate studies.



*PBS Adult Education classes are taught using various instructional methods tailored to the specific needs of adult learners. Students will be encouraged to develop critical thinking, research and study skills, and utilize technology for learning and collaboration. All students inherently benefit from being engaged in an active college environment.*

Space made possible through a grant from  
Positive Behavior Support Community Foundation