



## **PBS Adult Continuing Education (ACE) Classes Summer 2022 Tuesday Offering**

Meeting remotely on Zoom

### **JURASSIC FACT OR HOLLYWOOD FICTION?**

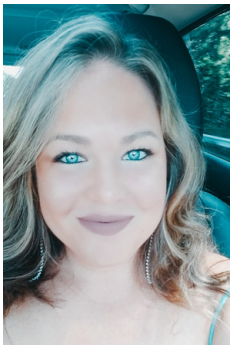
**Tuesdays 10am-11:30am; Instructor: Christine Hanley**

This course will dig up the facts that have been unearthed by scientists about some of the most intimidating creatures that have ever lived on this earth...dinosaurs! But just how real are the dinosaurs depicted on the movie screen? We will also be covering Steven Spielberg's popular movie franchise, Jurassic Park. Students will evaluate the movie franchise and identify what is truly fact and what is fiction. Students will also explore important concepts such as extinction, man vs. nature, and man vs. technology. Students will be able to share their thoughts and creativity on interesting questions, such as "What if the dinosaurs had survived?"; "What would that look like?"; and "Could there possibly be a future for any prehistoric species to be revived through DNA?"

### **MEET YOUR INSTRUCTOR:**

**Christine Hanley**

Christine Hanley, NYS-LBA, obtained a Bachelors in ELA Secondary Education at Stony Brook University and a Master's Degree in Special Education and Applied Behavior Analysis at Queens College. Christine is a valued member of the PBS family, supporting students in several school districts and in the community. Christine is a voracious consumer of everything in popular culture and has previously taught classes relating to television and film and how they affect the society and the fans that love them.



### **CLASS MEETING DATES:**

June 7th, 14th, 21st

July 12th, 19th, 26th

August 2nd, 9th

No class will be held on June 28 or July 5th.

**Course Fee: \$400 for each class.**

**Direct Billing now available.**

**PBS will work with FIs to accept direct payment for classes whenever possible.**

**Students will NOT be fully registered until verification of eligibility and available funding is provided to PBS.**

**The student assumes final financial responsibility should FI payment be denied.**

**Campus Connect is optional & available to registered students for no additional charge.**

**To register: <https://www.positivebehavior.org/learning--workshops.html>**

All students receive a Certificate of Completion.

Appropriate for all students.

Minimum number of registrants must be met for the class to run.

Questions: [adulted@positivebehavior.org](mailto:adulted@positivebehavior.org)

**Important info  
on Direct Billing!**